



AVOL Model J3-4810 Motorised Cast Iron Ball Valve

Electrically operated 2 way cast iron PN16 ball valve

Full bore 2 way cast iron ball valve, flanged PN16, fitted via stainless steel mounting kit with a **J3** electric actuator. Supplied assembled and dry bench function tested. Size range from 1/2" to 6".



Code	Function
J3-4813	Standard power to open - power to close - Stays put on mains failure
J3-4814	Failsafe BSR - Battery Spring Return - Fails to safe position using an internal battery
J3-4815	Modulating DPS - Digital Positioning System

Applications

Water, oil and many corrosive medias, subject to compatibility with wetted parts in contact with media. Actuators sized on a maximum differential pressure of 10 bar wet service, if the intended duty is above this differential, or dry (air or gas) call to check actuator sizing as a larger output actuator may be required.

Maximum working temperature of assembly is +70C. If the intended duty is a higher temperature than this, contact us for options.

Valve Specification

Body	Cast iron
Ball	Cast iron
Seats	PTFE
Pressure rating	PN16
Valve temp limits	-20 to +200°C
Actuator temp limits	-20 to + 70°C



Quick guide to the **J3** electric actuator standard features :

Highly visible LED light gives continuous actuator status indication.

J3 L - 12-24V AC/DC
J3 H - 80-240V AC/DC

Multi-voltage capable with auto-voltage sensing:

Torque output: range:
25~95Nm Break
20~80Nm Reseat

Electronic torque limiter
Protects against valve jams

Anti-condensation heater

Manual override

All connections via external DIN plugs ~ no need to remove cover to connect

Volt free end of travel confirmation switches

IP65 weatherproof housing

CE marked

Traceable sequential serial numbering system

Optional failsafe kit (Battery Back-up) - actuator fails to safe position on power failure

Optional modulating kit with digital positioning system, either 0-10V or 4-20mA

J3 Actuator status light basic function:

Constantly lit LED

If the actuator is operating correctly with no faults, the LED shows a constantly lit light.

The LED flashes with 2 blinks

If the actuator has been left in 'manual' mode, the actuator's motor runs but doesn't drive the output shaft. After a pre-set time, the actuator knows that as the torque limiter has not activated and that the motor is running, it is in manual.

The LED flashes on/ off

When the actuator senses an impending valve jam, the electronic torque limiter is activated and on activation, repeatedly flashes the LED on and off.

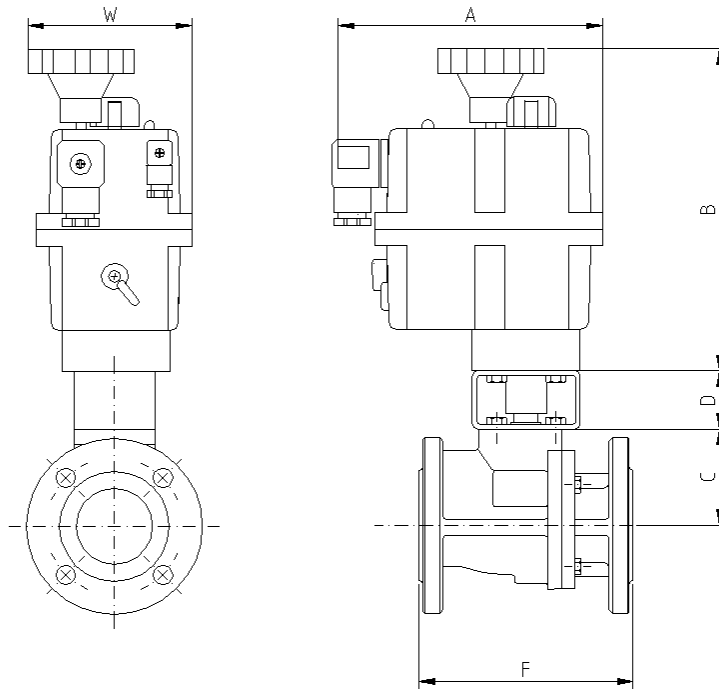




AVOL Model J3-4810

DIMENSIONS

Electrically operated PN16 cast iron ball valve - Dimensions (to nearest mm)



Dimensions remain unchanged for all versions (on-off, failsafe & modulating)

	Model	A	B	C	D	F	H	W	Kilos
1/2"	20	177	149	52	50	115	251	110	4.7
3/4"	20	177	149	54	50	120	253	110	4.7
1"	20	177	149	60	50	125	259	110	5.7
1 1/4"	35	177	171	65	50	130	286	110	8.0
1 1/2"	35	177	171	75	50	140	296	110	10.0
2"	55	177	196	83	50	150	329	110	13.2
2 1/2"	55	177	196	96	50	170	342	110	17.2
3"	85	177	196	114	50	180	360	110	22.2
4"	J2-140	235	254	128	70	190	452	214	35.2